

Meeting:	Safer Bromley Partnership Strategic Group
Date:	19th September 2013
Subject:	Residential Burglary Analysis (April – June 2013) - Update
Author:	Pratheepan Jeyapragasam, Senior Crime Analyst pratheepan.jeyapragasam@bromley.gov.uk

1 SUMMARY

- 1.1 This report provides an update in relation to the analysis of Burglary in a Dwelling between April and June 2013.
- 1.2 The analysis indicates a number of key factors in the current pattern of residential burglary and it is proposed that these key factors be tackled in order to facilitate a reduction in offending.

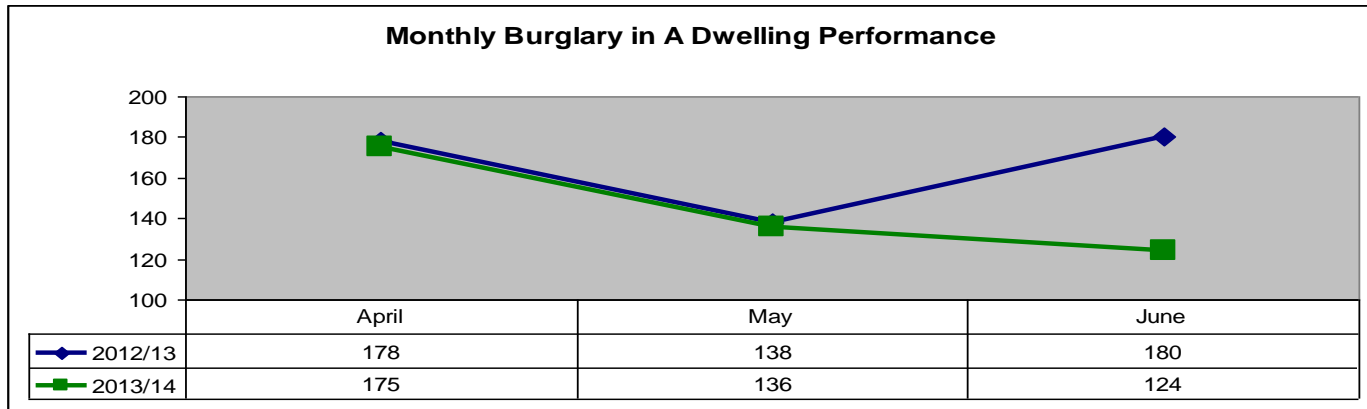
2 RECOMMENDATION

- 2.1 The Strategic Group is asked to note the information contained within this report and comment on the key findings.
- 2.2 The Partnership is advised that work be intensified to continue the delivery prevention advice to decrease Burglary offences (to include specific focus in terms of location and offence types). Delivered by Safer Neighbourhood Development Officers.
- 2.3 Analysis indicates that offences generally occur overnight; therefore it may also be appropriate to review the late night security at some venues, especially those along the borough's borders.

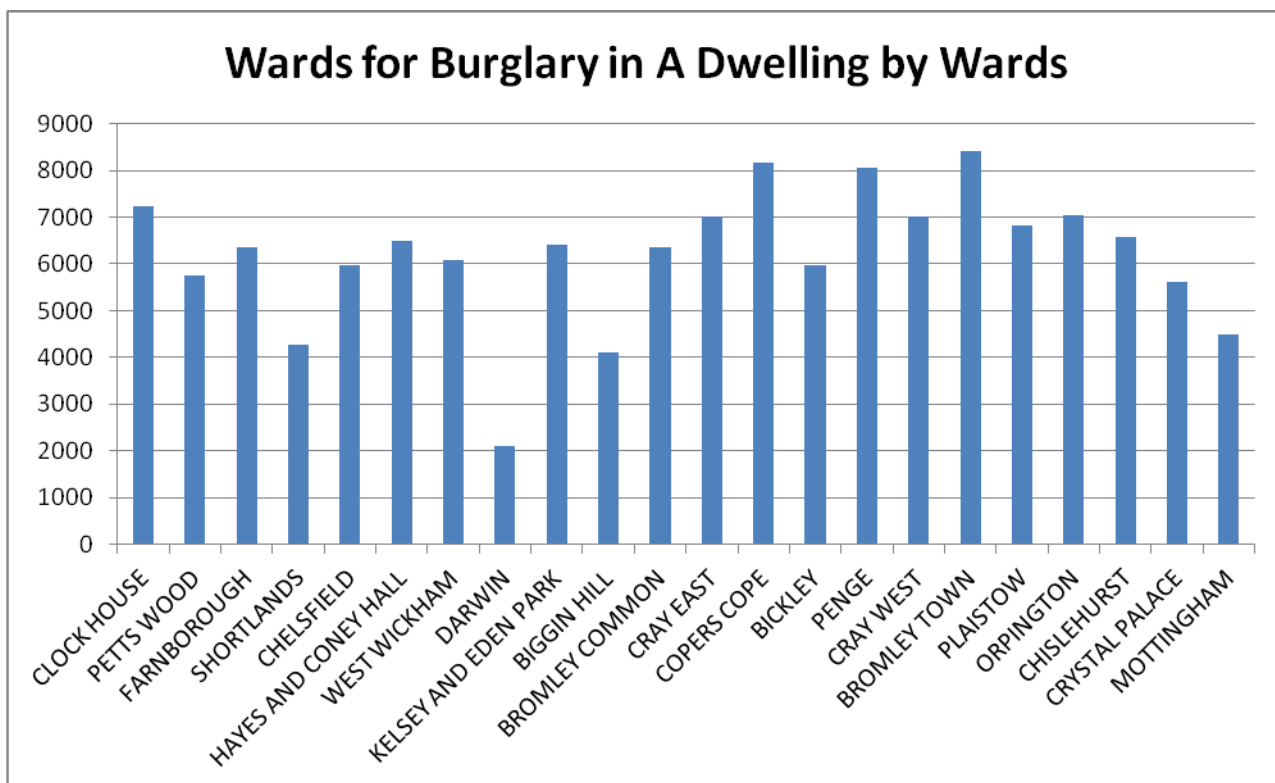
3 BACKGROUND INFORMATION

- 3.1 The data range used for the local analysis part of this investigation is from April to June 2013 (quarter 1).
- 3.2 During the April to June 2013 period of there were 435 Burglary in a dwelling Offences reported to the Police, this represented a reduction of 61 (↓12%) offences compared with the same period previous year.

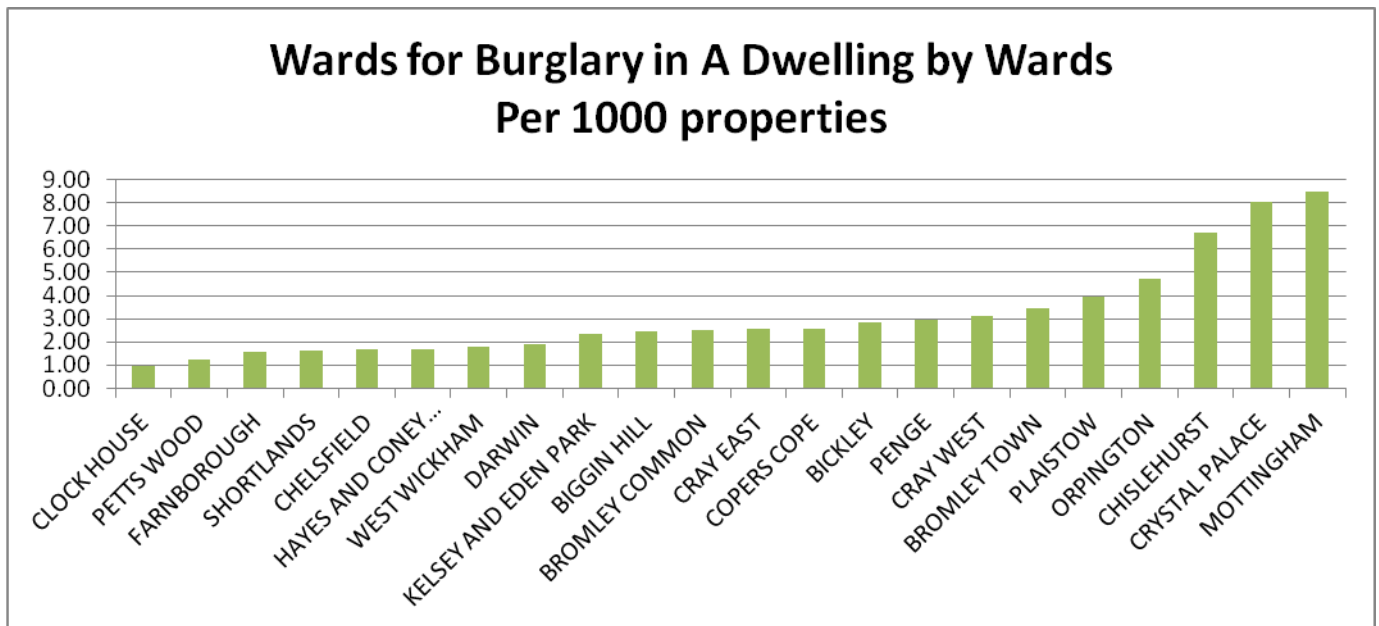
Burglary in A Dwelling



3.3 As shown above, Burglary in a Dwelling Offence numbers were similar in April and May this year compared with last year, but in June Burglary in a dwelling were reduced by 56 compared with last year.

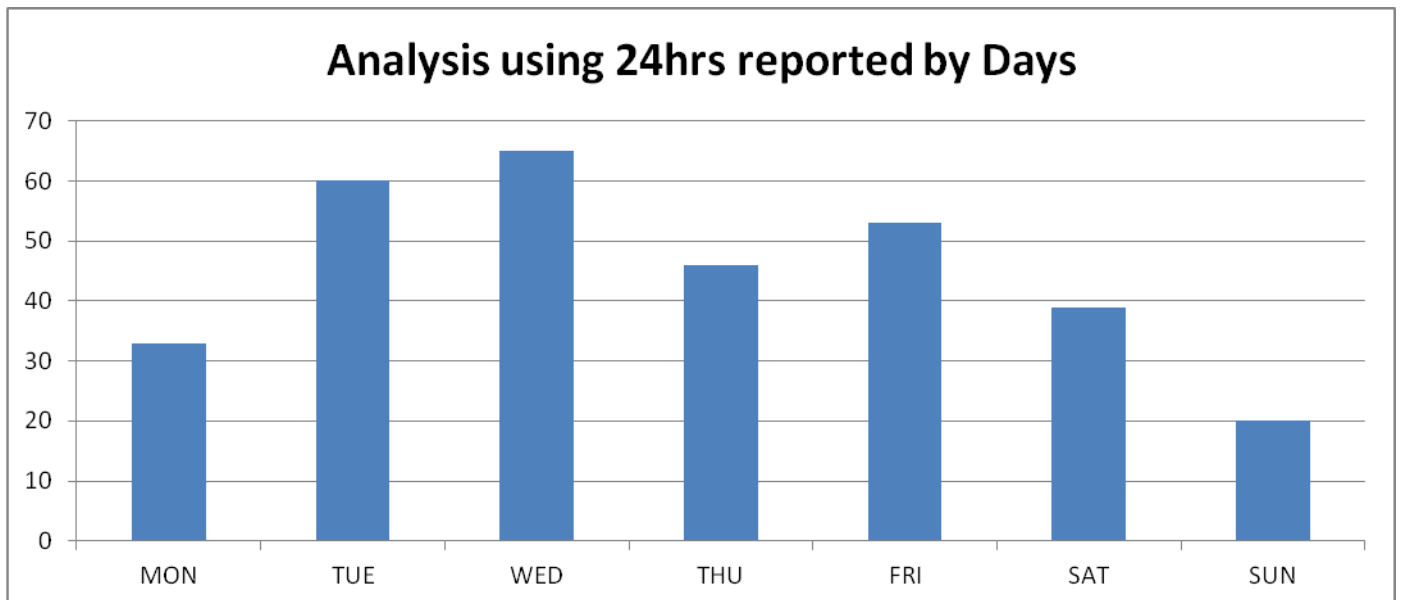


3.4 There are three main hotspot locations for Burglary in a Dwelling, Crystal Palace, Chislehurst and Mottingham. Based on current issues affecting Bromley Borough these locations remain the main focus for the Police.

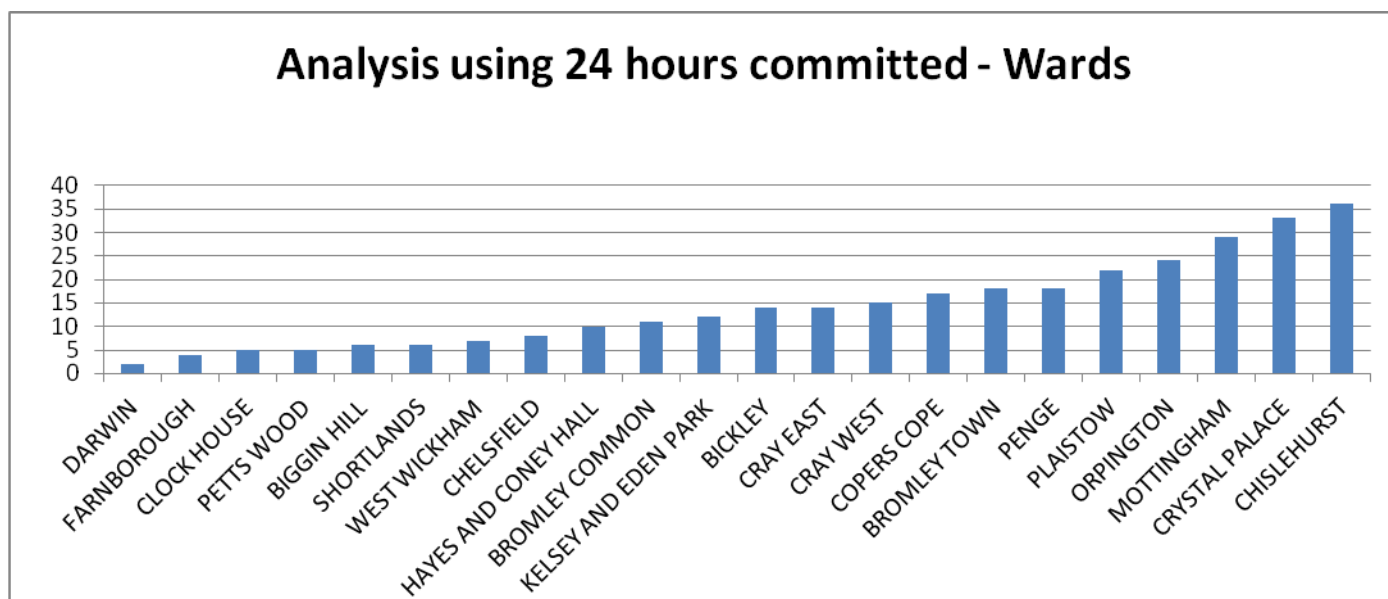


3.5 The chart above shows that Crystal Palace, Chislehurst and Mottingham were the three wards which have highest Burglary offences reported in the reporting period compared with number of properties in each wards

3.6 76% of the totals Burglary in a Dwelling Offences were reported within 24 hours period this shows that Burglary actually occurred within the 24 hours.

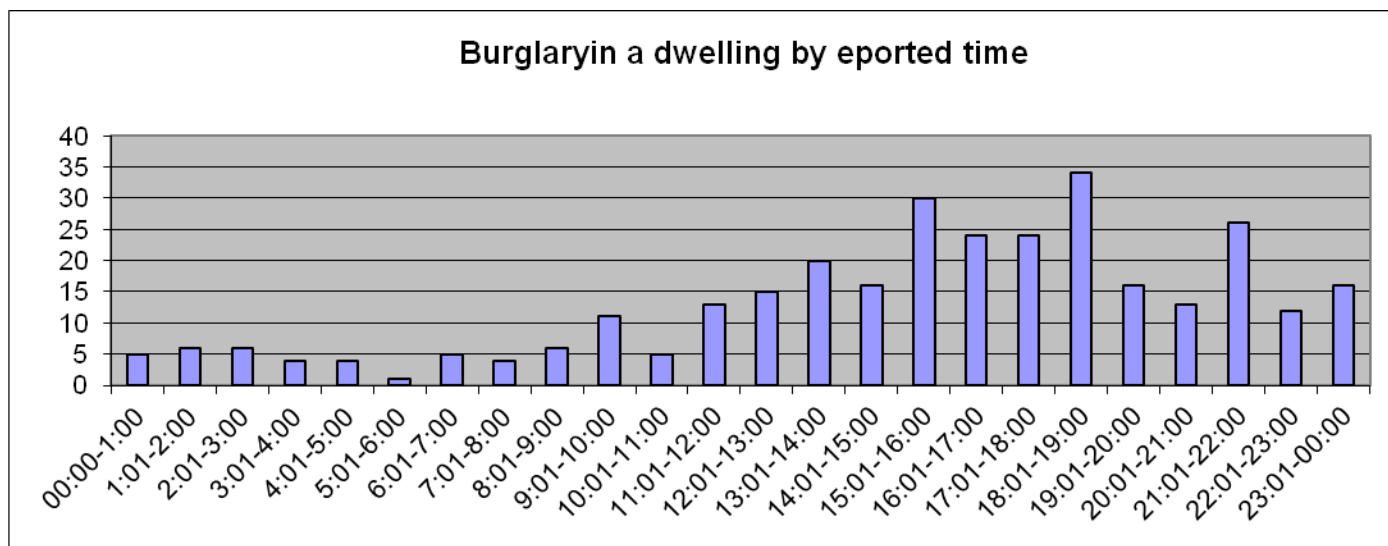


3.7 Based on the above 76% offences over the last Quarters, there was a peak on Tuesday and Wednesday for Burglary in a dwelling offence. It must be noted that weekend has seen the least number of offences reported.



3.8 As shown above, Crystal Palace, Chislehurst and Mottingham were the three main hotspots for Burglary in a Dwelling which was reported within 24 hours.

3.9 Burglary in a Dwelling reports seems to peak between the hours of 18:00 -19:01 and 15:01-16:00.



3.10 Burglaries in dwelling offences were reported to police in this reporting period where 90% of the properties were empty when this crime happened.

3.11 There were no specific targets victims identified, in general there were some vacant properties targeted either renovated or residents on holiday.